



The DZ Company, LLC  
4321 W. Eisenhower Blvd.  
Loveland, CO 80537  
970-667-2254

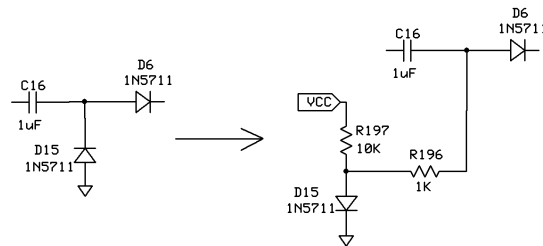
## Sienna Construction Note 6/22/10

### AM Receive Sensitivity Improvement

**Problem:** AM receive has a kind of “squelch” effect, in which tuning between AM stations results in no audio from the speakers. Once a station is tuned in, it comes in fine, but no noise is heard between stations.

**Solution:** Add a biasing circuit to the AM detector diode on the receiver board. See schematic and description of fix below.

#### AM receive sensitivity improvement



#### Remove D15

In the round pad where D15 was, place the cathode end of D15, pointing the anode up

In the square pad where D15 was, place a 1K 1/8W resistor, pointing the other end up

In the small via next to R93 (immediately next to D6, directly below R93) place a 10K 1/8W resistor, pointing the other end up

Solder the top of the two resistors and the diode together (in the air)

NOTE: The instructions above apply to Rev B boards. If you have a Rev A or A1 receiver board, use the via above R48 instead of R93 in step 4 above.